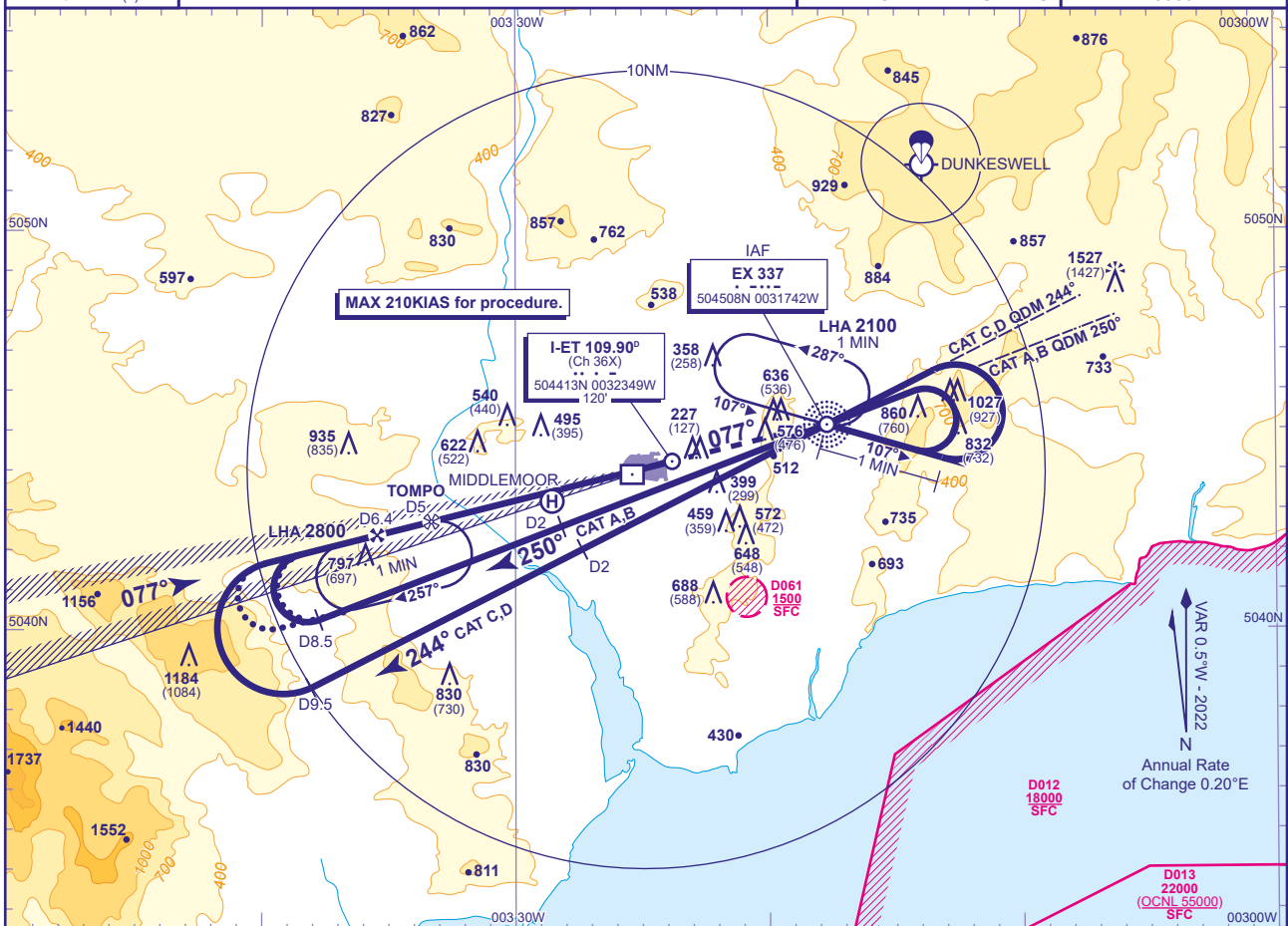


EXETER
ILS/DME/NDB(L)
RWY 08
(ACFT CAT A,B,C,D)

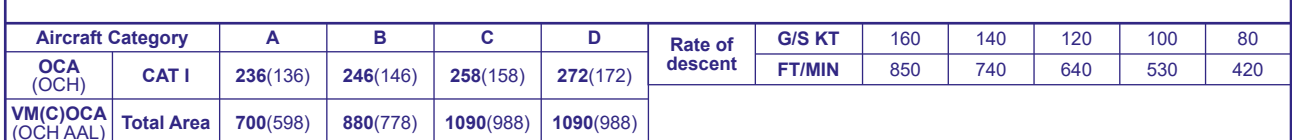


APP	128.980	EXETER APPROACH	AD ELEVATION	102
TWR	119.805	EXETER TOWER	THR ELEVATION	100
RAD	128.980, 123.580	EXETER RADAR	OBSTACLE ELEVATION 1527 AMSL (1427) (ABOVE THR)	
ATIS	119.330	EXETER INFORMATION		
				BEARINGS ARE MAGNETIC

TRANSITION ALTITUDE
3000



DME I-ET	6	5	4	3	2	1
ALT(HGT)	2060(1960)	1740(1640)	1420(1320)	1100(1000)	790(690)	470(370)



AIRCRAFT UNABLE TO RECEIVE DME I-ET
Advise ATC. Radar Ranges will be provided at 2NM outbound and 8.5NM or 9.5NM outbound and at 6.5NM and 4NM inbound.

Advise ATC. Radar Ranges will be provided at 2NM outbound and 8.5NM or 9.5NM outbound and at 6.5NM and 4NM inbound.

NOTE 1 Lowest altitude to commence procedure from hold after a missed approach is **2500**.
2 ATC will normally require aircraft to hold not lower than **3500** at NDB(L) EX or **3500** at TOMPO.
3 TOMPO hold not available without DME I-ET.

CHANGE (7/21): MAG VAR. MAG TRACKS. DME POSITION. DME I-ET ELEVATION. D012. D013 VERTICAL LIMITS REVISED.